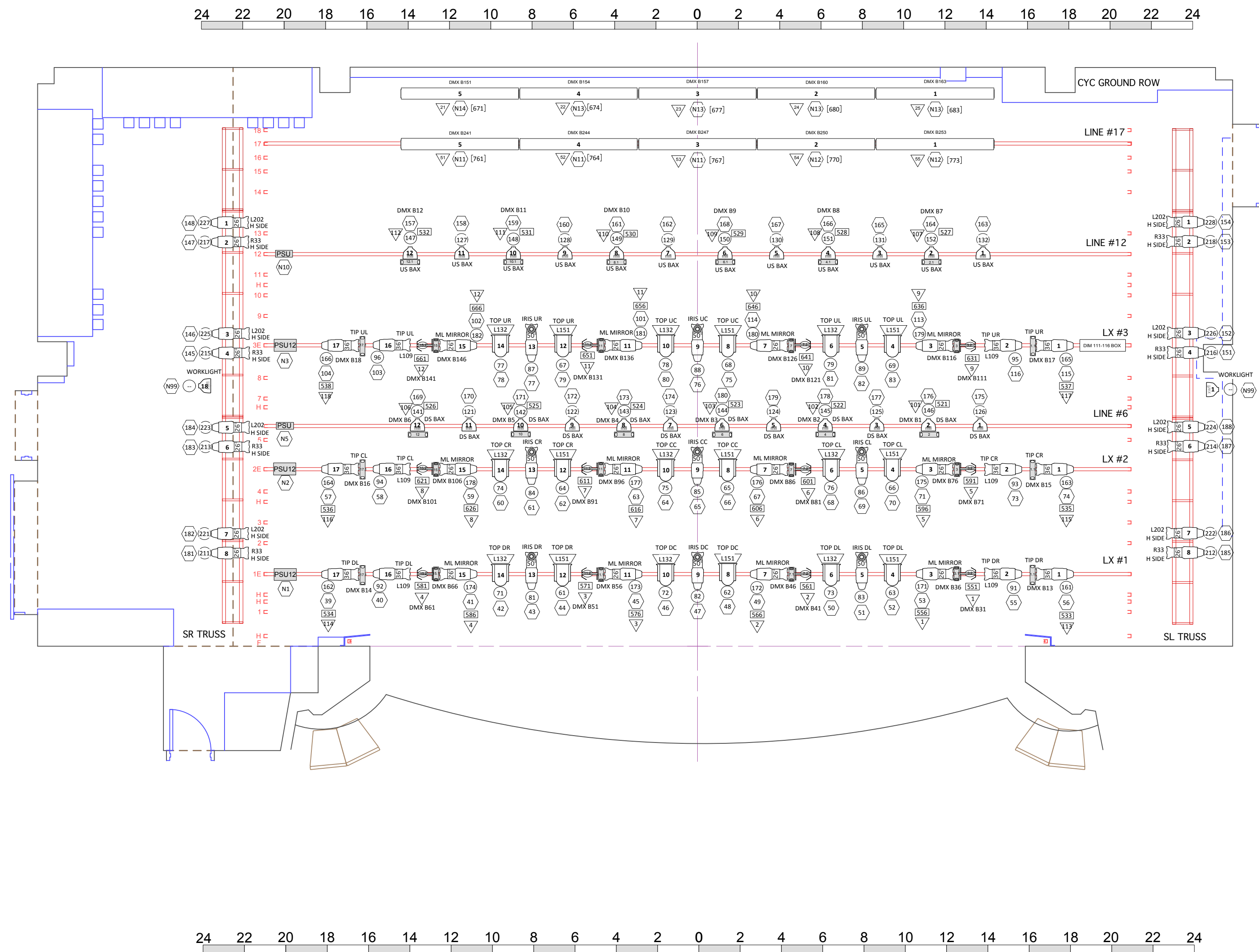


THE GROUND ROW LED UNITS WHEN NOT IN USE ARE EITHER STORED AGAINST THE BACK WALL OR DOWNSTAIRS. THEY MAY NOT BE SETUP, READY TO GO FOR EVERY SHOW.

Instruments	Num In Inventory	Used	Remaining
Source 4 50deg	18	17	1
Source 4 36deg	42	18	24
Source 4 26deg	34	28	6
Source 4 PAR MFL	40	24	16
Source 4 19deg	30	26	4
Source 4 10deg	20	20	0
Foxie Follow Spot	2	2	0
S4 Iris	25	17	8
Houselights	12	12	0
Rosco I-Cue	12	12	0
Spectra-Q3	25	18	7
Selecon Barndoor	24	18	6
Scroller PSU-12	4	3	1
Scroller PSU-08	6	2	4
S4 Par XWFL Works	2	2	0
Spectra-Q7	14	14	0
COLOR BLAST FOH	16	16	0
Selecon 7" Fresnel	24	18	6
12" Top Hat	20	20	0
6.25" Top Hat	50	24	26
Colorbize 72	10	10	0



THE 10 STAGE COLOR BLASTS DO NOT HAVE A SPECIFIC LOCATION. THEY MAY OR MAY NOT BE AVAILABLE AND/OR HUNG. THEY ARE NOTED ON THIS PLOT FOR CHANNEL NUMBER REFERENCE ONLY.

- DMX B217
- DMX B220
- DMX B233
- DMX B226
- DMX B239
- DMX B232
- DMX B235
- DMX B238
- DMX B241
- DMX B244

SCROLLER STRING

FRAME	COLOUR	CODE	STOP %
1	R00	NC	0%
2	R64	ST	7%
3	R08	AM	12%
4	R34	LP	20%
5	R51	LV	25%
6	R17	AM	32%
7	R44	PK	38%
8	R57	LV	46%
9	R80	BL	51%
10	R95	GR	58%
11	R358	LV	65%
12	R83	DB	71%
13	R26	RD	78%
14	R39	MA	86%
15	R19	OR	91%
16	R310	YL	99%

FLY LAYOUT NOTE:
EXCEPT FOR ELECTRICS, CURRENT LOCATION OF SOFT GOODS MAY NOT BE 100% ACCURATE. PLEASE CHECK WITH TD TO CONFIRM CURRENT HANGING LOCATIONS.

SIDE TRUSS:
THE SIDE TRUSS IS FOR SIDE LIGHTING, SIDE LIGHTING PIPES, AND GERMAN MASKING. SIDE LIGHTING PIPES ARE NORMALLY NOT PERMITTED TO BE HUNG OFF THE STAGE ELECTRICS. ALL MUST BE RIGGED FROM THE TRUSS.

RE: MOVING LIGHTS:
FIXTURES THAT HAVE A MIRROR AND SCROLLER ATTACHED SHOULD NOT BE MOVED; THEY ARE CONSIDERED ONE FIXTURE. THE ENTIRE FIXTURE MAY BE RELOCATED IF APPROVED, BUT THE Q-7 SCROLLERS MAY NOT BE REMOVED AND USED SEPARATELY.

RE: COLOR BLAST LED:
THE SIX UNITS HUNG IN THE FOH ARE USED TO LIGHT THE PROSCENIUM ARCH AND ARE NOT PERMITTED TO BE MOVED.

PLEASE NOTE:
UNIVERSE "B" WHICH RUNS SCROLLERS, I-CUES, AND LEDS DMX IS ADDRESSED BY THE BOARD TO START AT DIMMER 521. THIS MEANS THAT A SCROLLER WITH IT'S DIP SWITCHES SET TO DMX ADDRESS 1 WILL BE DIMMER 52 ON THE BOARD. DMX 2 WOULD EQUAL 522 AND SO ON.
UNIVERSE "B" RUNS TO THE OPTI SPLITTER ON THE FLY FLOOR. SCROLLER ADDRESSES START AT 1 AND MIRRORS START AT 31. UNIVERSE "C" WHICH RUNS LED FIXTURES IS ADDRESSED TO START AT 753.
IF RUNNING YOUR OWN CONSOLE SET TO START UNIVERSE B AT 513 YOU WOULD NEED TO SUBTRACT 8 FROM EACH ADDRESS.
WHEN PATCHING, USE THE CHANNEL OF THE FIXTURE THE SCROLLER IS ATTACHED TO AS THE INTENSITY CHANNEL.
FIXTURES WHICH HAVE BOTH A SCROLLER AND MIRROR ATTACHED ARE LINK IN THE BOARD AS ONE FIXTURE. EACH FIXTURE IS RESERVED 10 DMX CHANNELS. THE FIRST UNIT STARTS AT 31 WITH THE MIRROR USING THE FIRST 4 DMX CHANNELS. AFTER LEAVING 35, 45, 55... BLANK THE SCROLLER IS ADDRESSED AS 36. THIS MEANS THE SECOND FIXTURES SCROLLER WOULD BE 46, THE NEXT 56, AND SO ON.

the ROYAL & MCPHERSON theatres society

LIGHTING HOUSE HANG 2011

MCPHERSON PLAYHOUSE - STAGE

190 DIMMERS

12 HOUSLIGHT DIMMERS

DESIGNER: A. WILKINSON

DIRECTOR:

VENUE CAD: T. HEEMSKERK

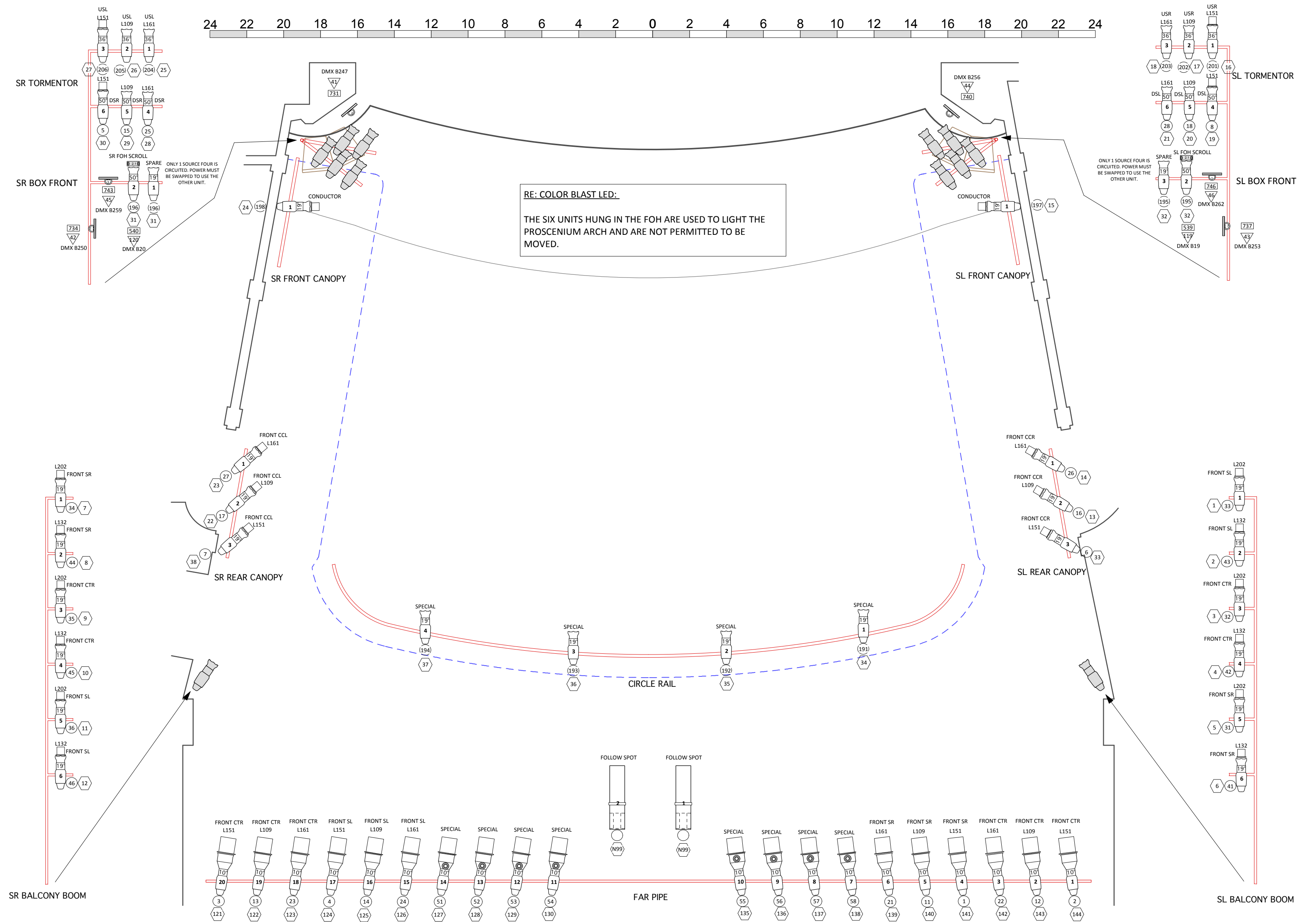
DRAWN BY: B. KEITH

DATE: MAY 21, 2011

SCALE: 1/4" = 1'-0"

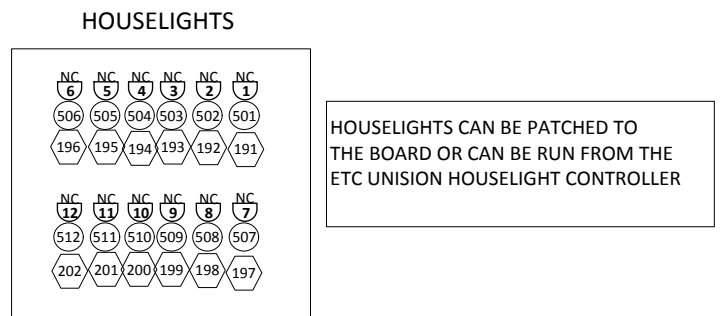
REVISION:

1 OF 2



RE: COLOR BLAST LED:
 THE SIX UNITS HUNG IN THE FOH ARE USED TO LIGHT THE PROSCENIUM ARCH AND ARE NOT PERMITTED TO BE MOVED.

PLEASE NOTE:
 THE LOCATION OF THE FAR PIPE POSITION HAS BEEN CHEATED CLOSER TO THE STAGE FOR THIS DRAWING. TO VIEW THE ACTUAL PLACEMENT, PLEASE USE THE PLAN AND SECTION DRAWINGS FOUND ON THE WEBSITE.



SCROLLER STRING

FRAME	COLOUR	CODE	STOP %
1	R00	NC	0%
2	R64	ST	7%
3	R08	AM	12%
4	R34	LP	20%
5	R51	LV	25%
6	R17	AM	32%
7	R44	PK	38%
8	R57	LV	46%
9	R80	BL	51%
10	R95	GR	58%
11	R358	LV	65%
12	R83	DB	71%
13	R26	RD	78%
14	R39	MA	86%
15	R19	OR	91%
16	R310	YL	99%

the ROYAL & MCPHERSON theatres society

LIGHTING HOUSE HANG 2011

MCPHERSON PLAYHOUSE - FOH

190 DIMMERS

12 HOUSELIGHT DIMMERS

DESIGNER: A. WILKINSON
DIRECTOR:
VENUE CAD: T. HEEMSKERK
DRAWN BY: B. KEITH
DATE: MAY 21, 2011
SCALE: 1/4" = 1'-0"

REVISION:

2 OF 2